

# *Aivee*

**Edition one Straight pull hubs**

**User manual**



## **INTRODUCTION**

At the cutting edge of technology, the Aivee equipment line is based on our research and development office overseen by a team of enthusiasts, always attentive to the needs of users. The Aivee signature is a guarantee of quality on all roads, tracks and paths.

Aivee is a unifying brand, built on three pillars: emotion, innovation and accessibility. Our challenge is here, to encourage emotion and provide pleasure to the greatest number: sportsmen, enthusiasts. Our will is without concession, make a high-end brand accessible, products available through an affordable price offer, and allow you all the boldness!

## **PRESENTATION**

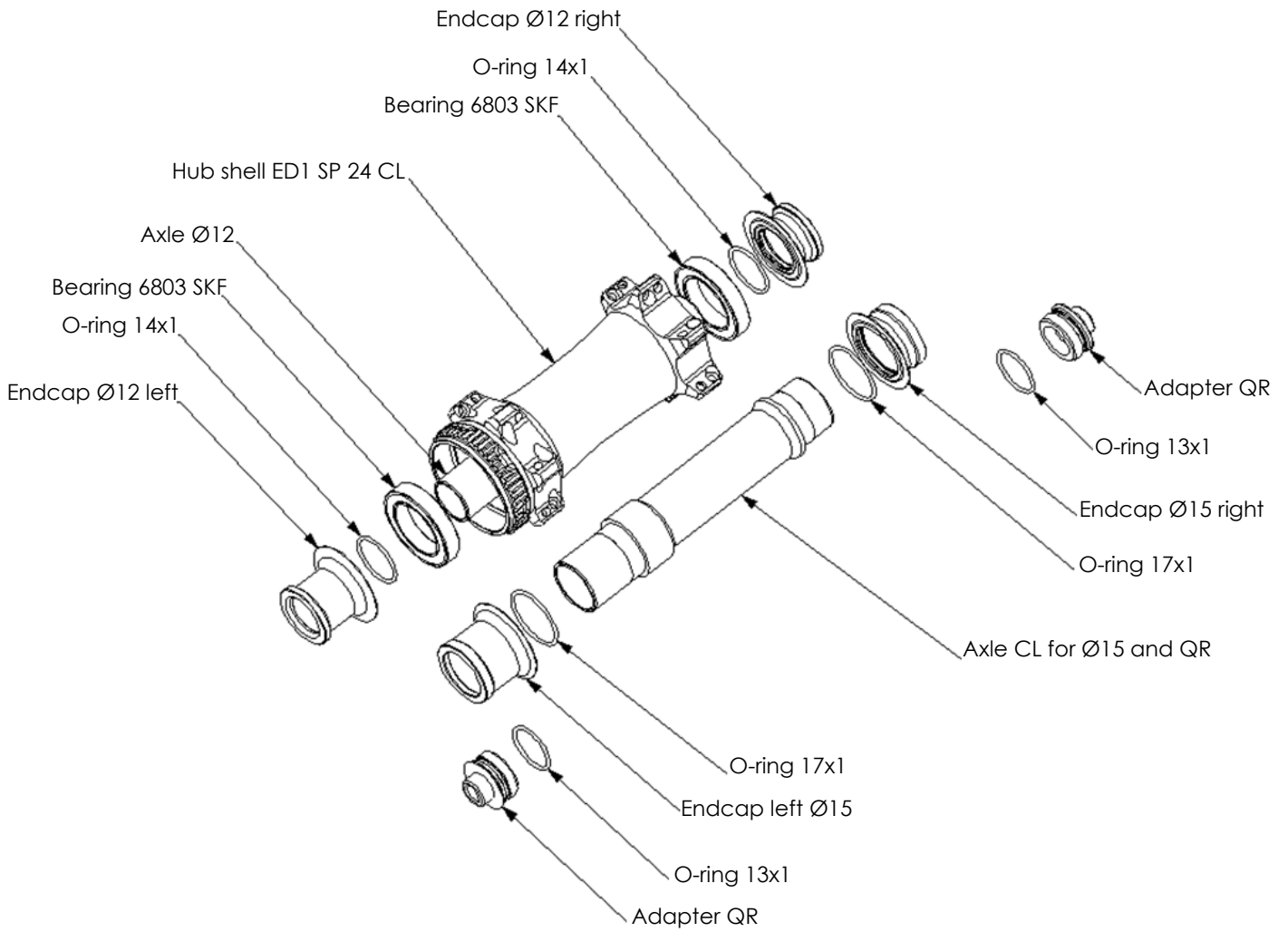
The Edition One Straight Pull hubs were designed with performance in mind: improving racking speed, number of engagement points, hub geometry, while aiming for the lowest weight without compromising on life. To do this, the Edition one straight pull hubs are equipped with sealed bearings lubricated with a grease specially developed for our hubs. The hubs were designed to have 48 engagement points, thanks to 3 ratchets. The stiffness is ensured by means of holes with rays directed directly towards the rim and of great thickness. Finally, the geometry has been carefully studied to offer a fitting with asymmetrical and symmetrical rims.

The Edition one straight pull is a range of hubs made for enthusiasts who seek lightweight material that guarantees the best geometry while maintaining a competitive weight.

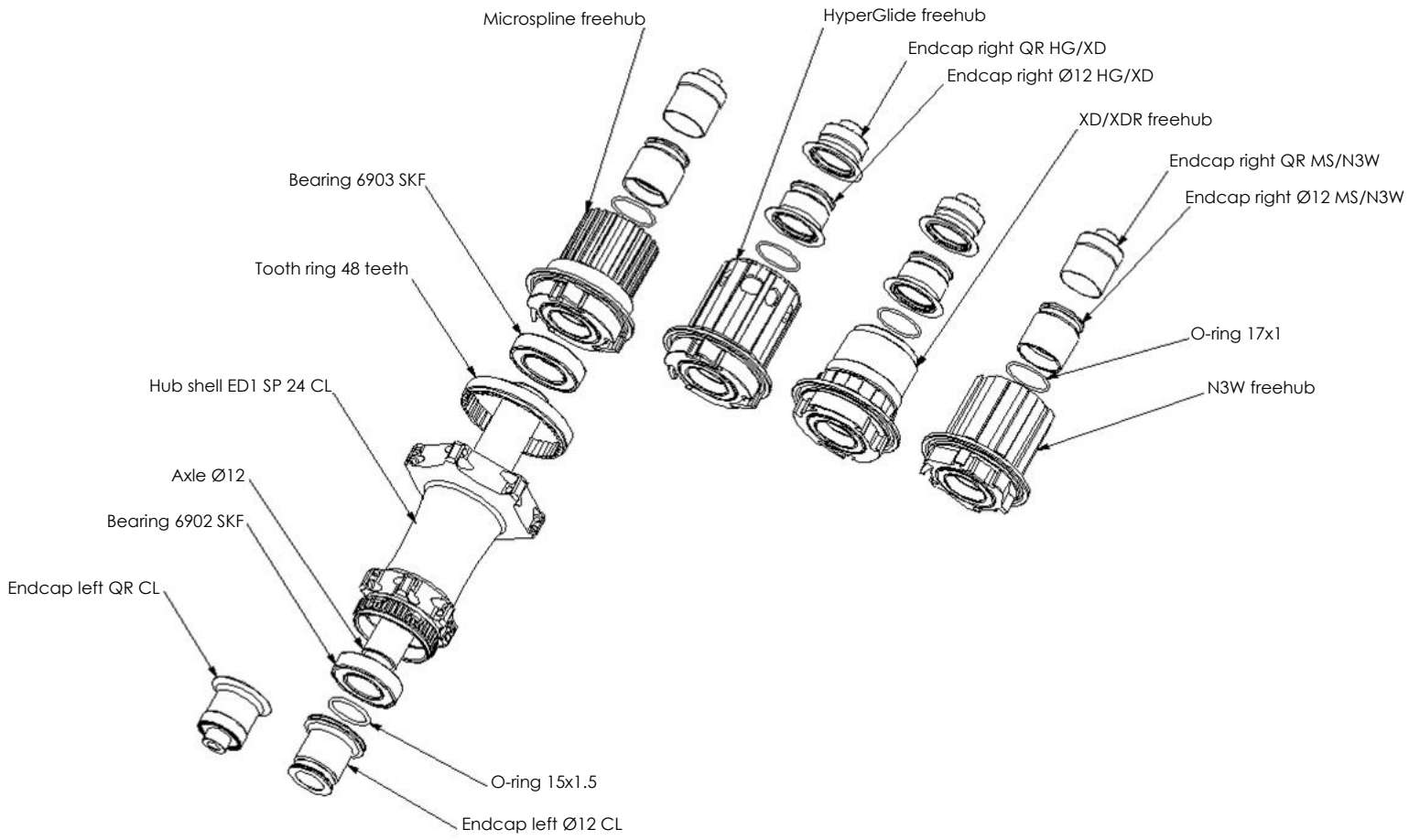
## **MOUNTING**

The Edition one SP hubs are only available in 24 holes. The tension of the shelves must not exceed 1200 N. Aivee cannot be held responsible for assembly that does not comply with the recommendations in this manual.

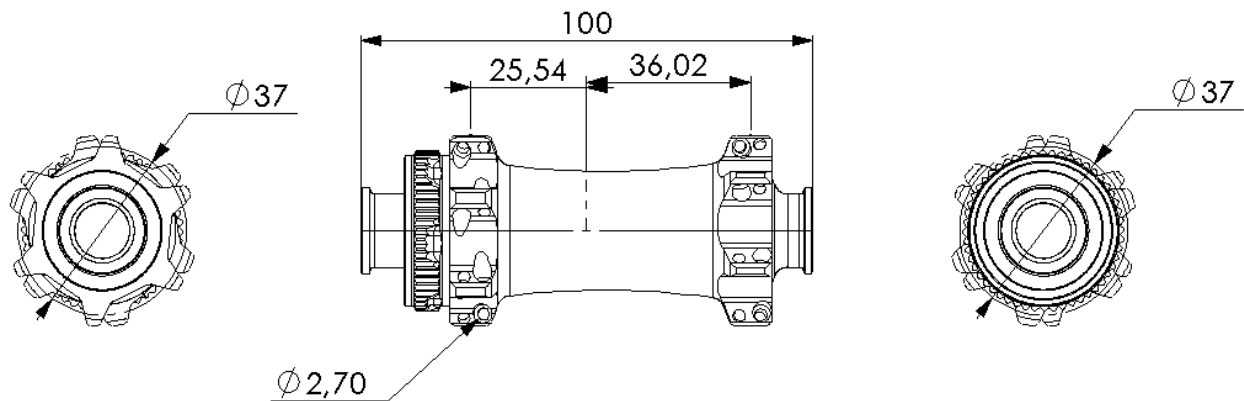
## CENTERLOCK FRONT HUB



## CENTERLOCK REAR HUB

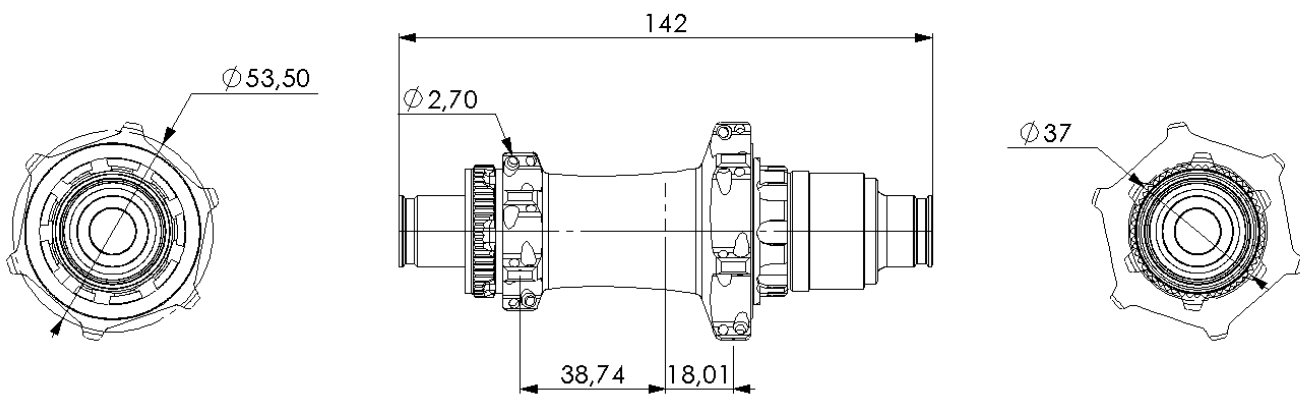


## GEOMETRIE / WEIGHT



Spoke hole offset : 0 mm

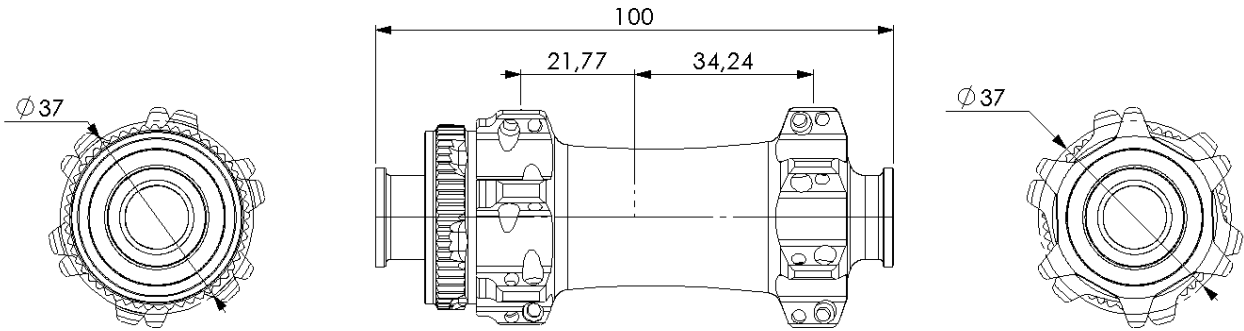
Weight :  
80 g



Spoke hole offset : 0 mm

Weight :  
198 g

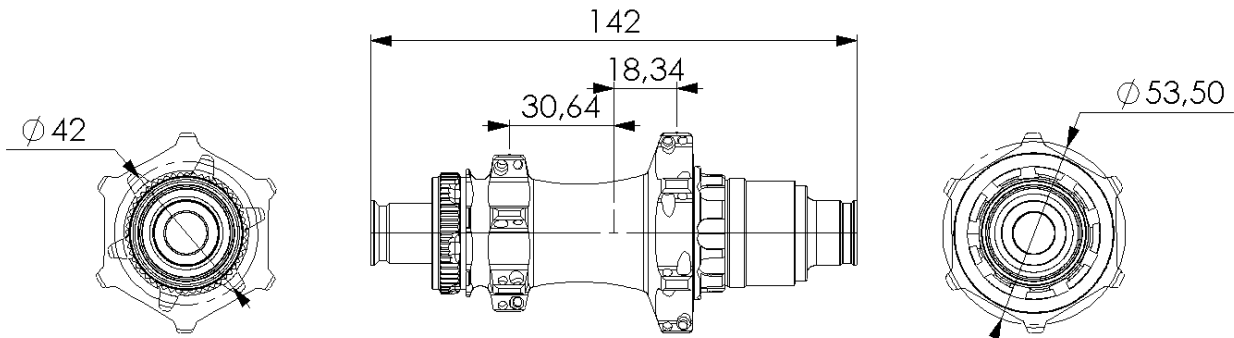
## GEOMETRIE / WEIGHT (V2)



SPOKE HOLE OFFSET : 0 mm

Weight :

83 g



SPOKE HOLE OFFSET : 0 mm

Weight :

190 g

## CONVERTING

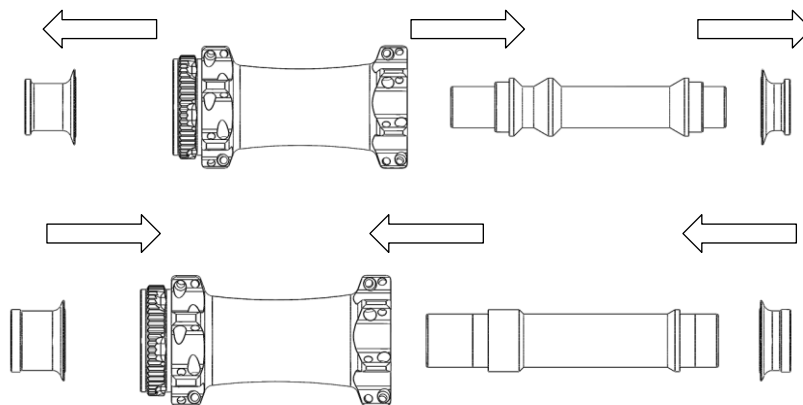
Edition one SP hubs are compatible with 9 mm (QR), 12 mm and 15 mm front axles, and 9 mm (QR) and 12 mm rear axles. The conversion between these different standards has been designed to make this as easy as possible with the help of endcaps of different sizes.

### Notice :

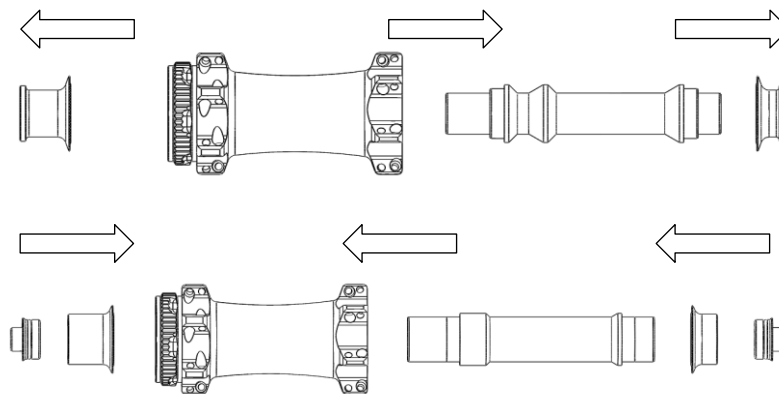
The rear hubs are compatible with HG, XD, MS, and N3W standard using a specific freewheel body kit. It is possible to change the standard by procuring the appropriate kit and changing the tip if necessary.

### Front hub

To change from 12x100 to 15x100, you have to remove the endcaps (by pulling them) and the axle of the hub, then insert the specific Ø15 mm axle and put the endcaps of Ø15mm provided with the kit.



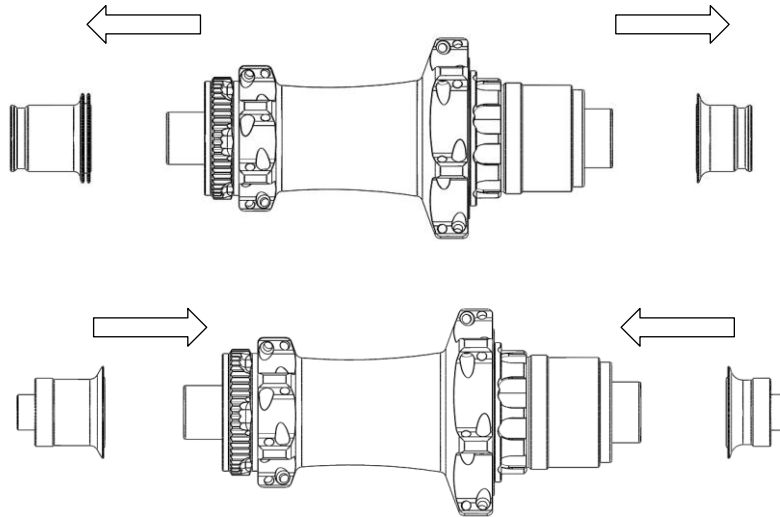
To change from 12x100 to 9x100 (QR), repeat the method explained above and add the QR adapters.



Invert the methods according to the dimensions you want.

## Rear hub

To change from 12x142 to 9x135 (QR), simply remove the endcaps (by pulling them) and make sure to choose the correct endcap on the freewheel side (right side) according to the used freewheel body.



Reverse the method to go from 9x135 (QR) to 12x142.

## MAINTENANCE

Edition one SP hubs are built to last. With minimal maintenance, they will perform even better. Don't hesitate to clean them when you accumulate muddy exits or when you think they are soiled.

### Front hub

To clean the front hub, simply remove the endcaps. Then, remove the mud and dust that may interfere with the operation of the bearings. Reassemble by lightly lubricating the elements.

### Rear hub

To clean the rear hub, remove a endcap. Pull out the cassette body. Then clean the tooth ring and the ratchets if necessary. Oil the assembly (oil viscosity greater than 150 cSt) and reassemble the cassette body by turning counterclockwise so that the ratchets fit into the hub body. Then replace the appropriate endcaps.





## SAFETY WARNING

This user manual contains important and useful information regarding the installation, operation and maintenance. Please read it carefully and follow the instruction of installation as detailed in this user guide. If you have any doubt regarding your ability in installing, please consult your AIVEE dealer and seek the assistance of a professional bicycle mechanic.

Incorrect installation or use may impair performance and could result in a dangerous situation leading to serious injury or death. Components that have experienced excessive wear, deformation, impacts or any other damage, need immediate professional inspection and replacement by a new AIVEE component.

### MAINTENANCE

**Do not clean your hub with a high-pressure cleaner, this could cause water infiltration and the damaging of some components.**

Inspect your AIVEE product before each ride check the dent and its looseness. Parts after fall or crash should be inspected by professional bicycle mechanic.

### WARNING

Continuing to use damaged parts may lead to loss of control and could cause serious injury or death. Cyclists should inspect their bicycle and parts regularly. He should check bolts and other fasteners periodically for tightness, in order to determine the need for service and to detect any damage that may have occurred from normal use.

For more information, please contact us.

# Aivee

Aivee S.A.S

Les Quatre Chemins de l'Oie BP 16-85140 Sainte Florence France

Phone: (33) 2 51 66 10 29 - fax: (33) 2 51 66 08 01

E-mail: [contact@Aivee.fr](mailto:contact@Aivee.fr) Web: [www.Aivee.fr](http://www.Aivee.fr)